

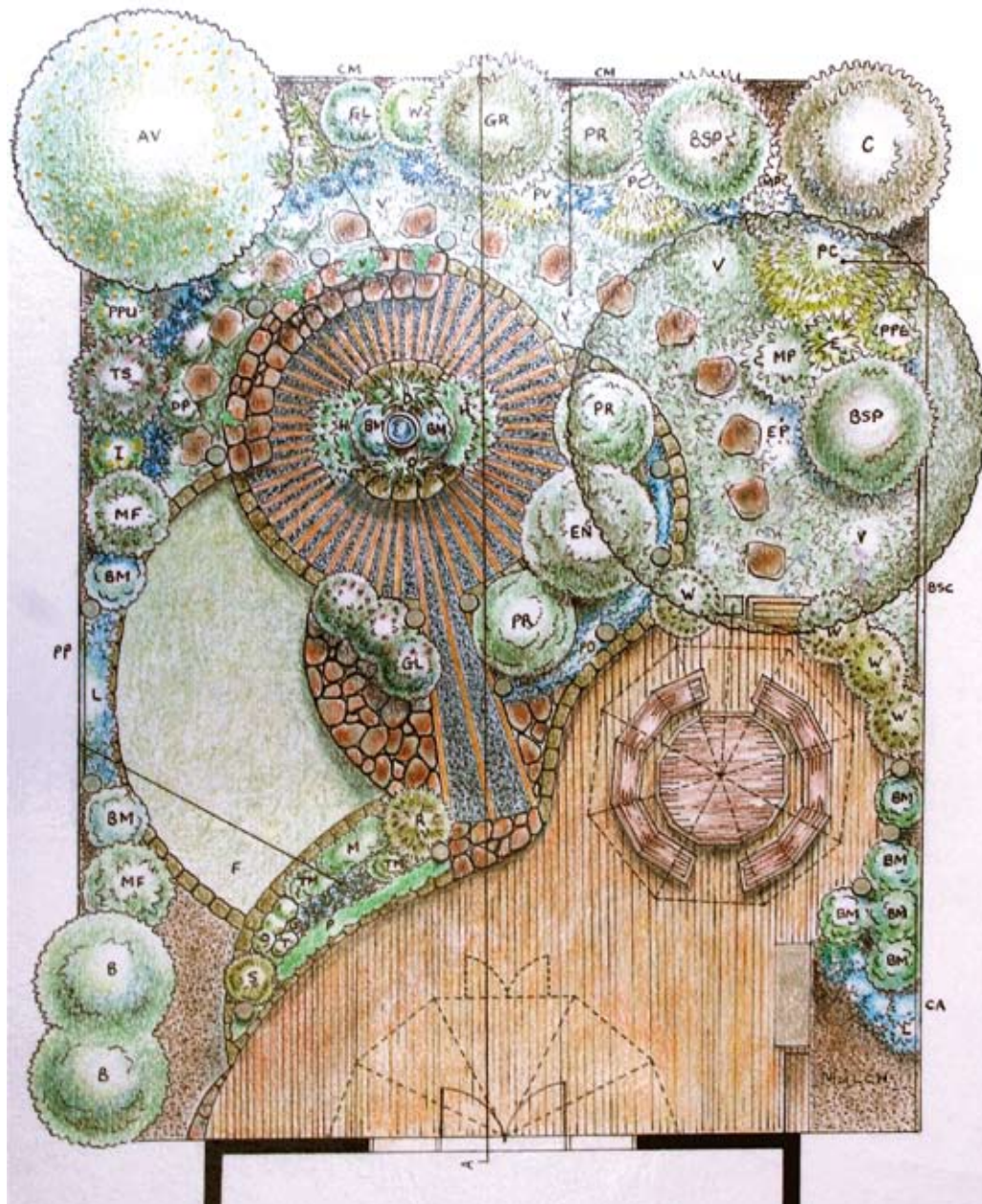
AILDM STUDENT DESIGN COMPETITION 2006

Last year's AILDM student competition saw many outstanding entries. In previous issues of Landscape Outlook we have shown you the plans of our first and second prizewinners, Tamsin Edwards Francis and Mark Hill.

Winning third prize in this competition is an outstanding achievement considering the extremely high standard of entries. **Donna Laing** was a Certificate student from the Blue Mountains campus of the **Western Sydney Institute of TAFE** who was given special permission to enter, as usually the student must be studying for a Diploma as a minimum. Donna's teacher saw the talent in her student and put forward a good case for her – and the result certainly supports her confidence.

DONNA'S DESIGN

Repeated intersecting circles are the strength of this appealing and richly planted garden. Textural contrasts of decking, gravels and pebbles create ground-plane interest and an overall colour theme of soft blues brings a unity and harmony to the design. Small, incremental level changes make this garden both child and older person friendly. Larger shrub masses give shape to the garden spaces and there is plenty of garden area for our retired couple to enjoy and places for children to play. Interesting details make this garden feel high budget but would be very affordable to build.





Donna's raised point perspective imagines the garden from the vantage point of the house and gives us a clear view of the garden's strengths. Subtle colouring reflects the restful design and a strong pen hierarchy gives her plan almost a three-dimensional quality.