

AILDM STUDENT DESIGN COMPETITION 2006

During 2006, AILDM ran its second national design competition. Attracting nearly 80 entries from 4 states and both TAFEs and universities, the standard of the entries was very high, showing the great skills developing in our landscape design student population. Prizes included a trip to Singapore to work with Jim Fogarty on his display garden for the Singapore Garden Festival, two \$500 book vouchers and 6 other merit awards.

Landscape Outlook will feature several of the competition prizewinners over the next few issues.

Students were asked to design a garden for Betty and Jack Andrews, a professional business couple about to retire who are fit and active and enjoy gardening. Their rear garden, which faces north, is 12m wide by 15m deep with the land rising to the rear of the block. The Andrews plan to play in the garden with their grandchildren and like to cook and eat outdoors with dining for up to 12 people. Jack collects native orchids and Betty wants to grow fresh herbs. Local government rules restrict the hard surface area to no more than 33% and require at least one tree growing to 7m tall.

Tamsin Edwards-Francis of **Brisbane North Institute of TAFE Queensland, (Grovely Campus)** won first prize with a beautiful hand drawn presentation and a design featuring simple, elegant curves. An open lawn spirals in to a quiet rockery retreat; sunny lawn contrasts with heavily shaded areas for sitting and playing and transitional zones of open vine-covered pergolas link the house and garden. The garden has layers of interest and separated areas but is not over-compartmentalised. An appropriately sized entertaining area is located conveniently close to the house. Tamsin's loose hand-drawn style, informative perspective and elevation drawings and lively colouring all served to communicate her excellent design.

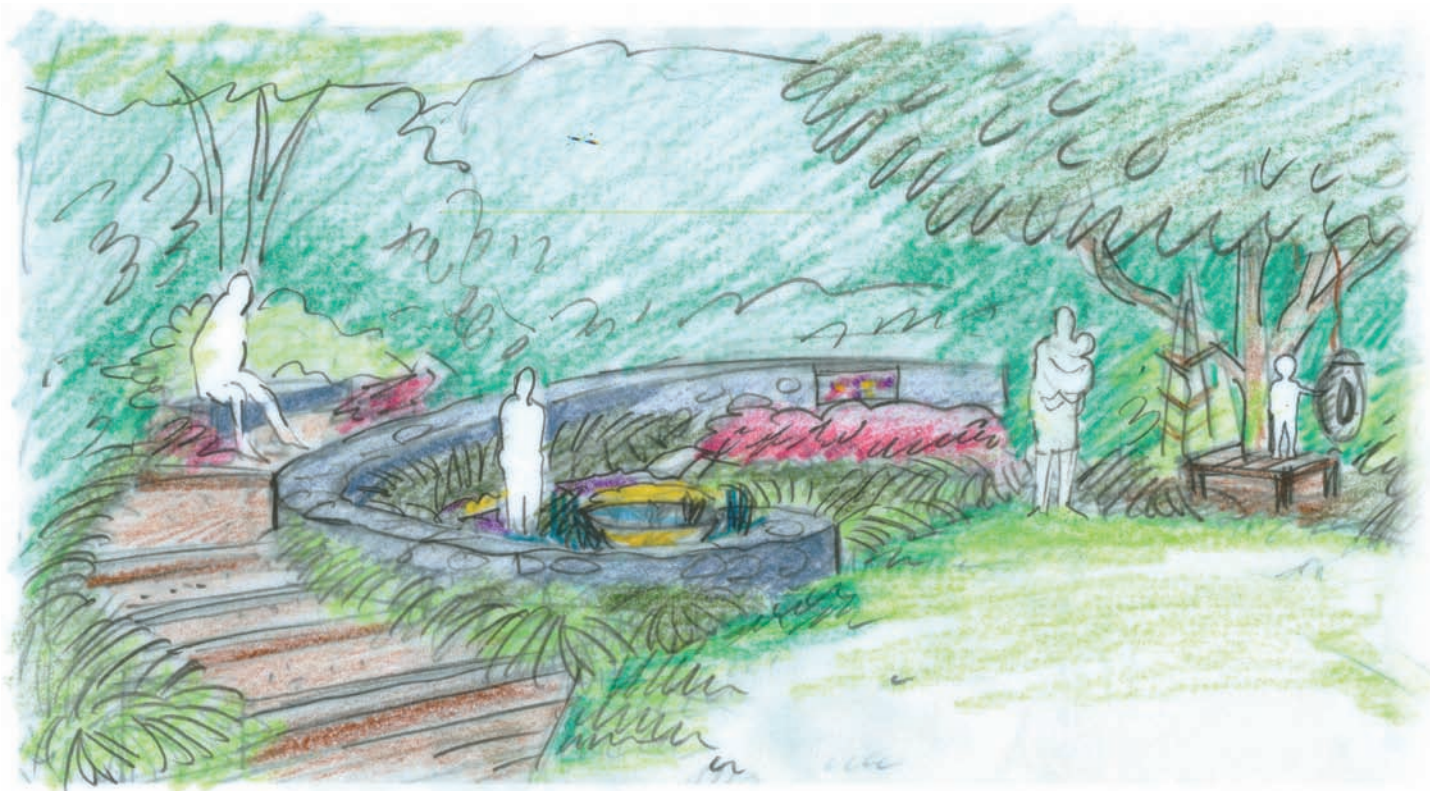
OTHER MAJOR PRIZEWINNERS WERE:

Second prize - Mark Hill of Ryde TAFE, Sydney NSW

Third prize – Donna Laing of Western Sydney Institute of TAFE, Blue Mountains NSW

Highly Commended – Christopher Webb of University of Melbourne

Commended – Melanie Foster and Vicki Pericak, both of Ryde TAFE

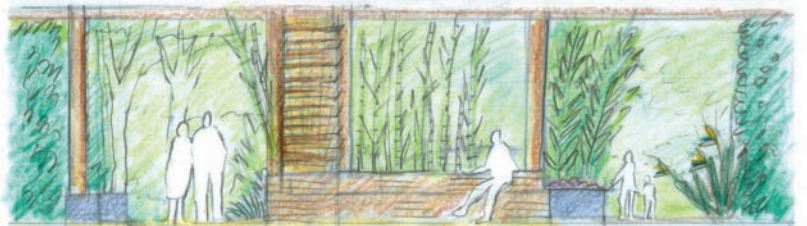


View to the Rockery Retreat
perspective sketch.

not to scale



View to Shade House
perspective sketch
not to scale



SECTION A 1: 50 Tropical Verandah



SECTION B 1: 50